

Drawings

EJX438B Diaphragm Sealed Gauge Pressure Transmitter (Transmitter body section)

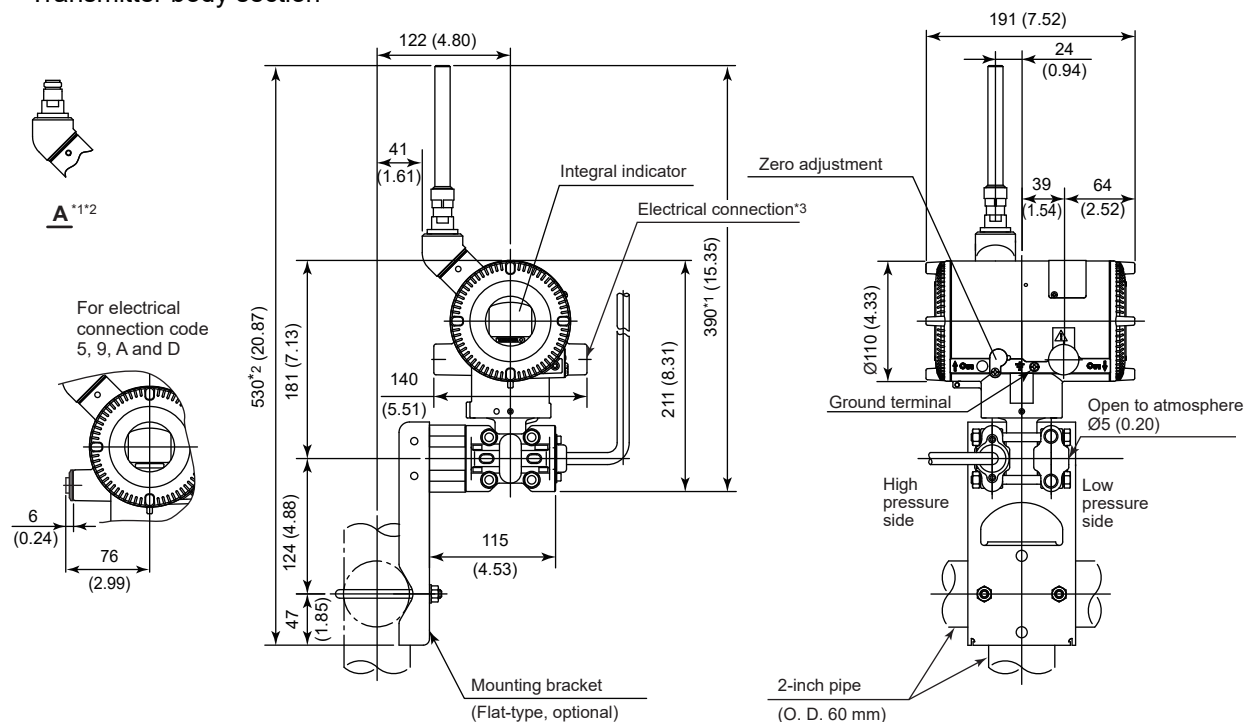
DPharp **EJX**™

SD 01C27J03-01EN

[Style: S1]

Unit: mm (approx. inch)

● Transmitter body section



*1: When amplifier housing code 9 is selected, the value is 270 mm (10.63 inch).

In this case, the figure is shown as A.

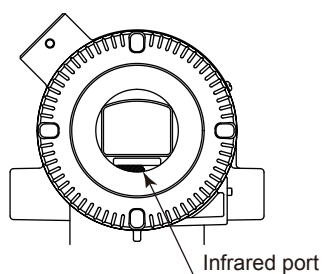
*2: When amplifier housing code 9 is selected, the value is 410 mm (16.14 inch).

In this case, the figure is shown as A.

*3: Applicable for the external powered type.

*4: When electrical connection code 7 or C is selected, a blind plug is protruded upto 8 mm from the electrical connection.

● Infrared Configuration



● Terminal Configuration for the External Powered type

