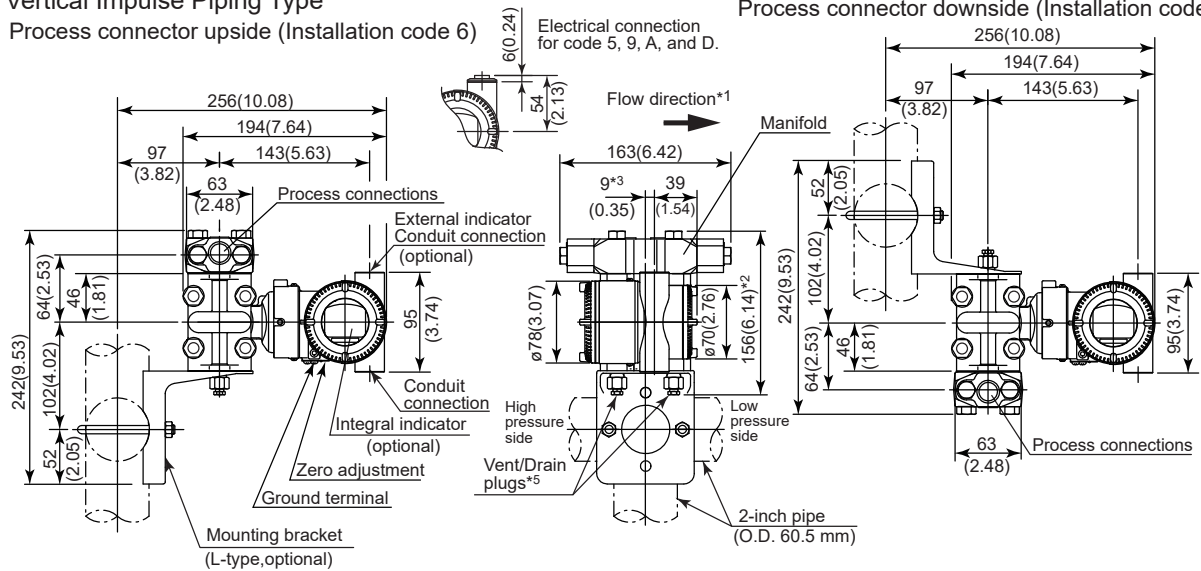


Unit: mm (approx. inch)

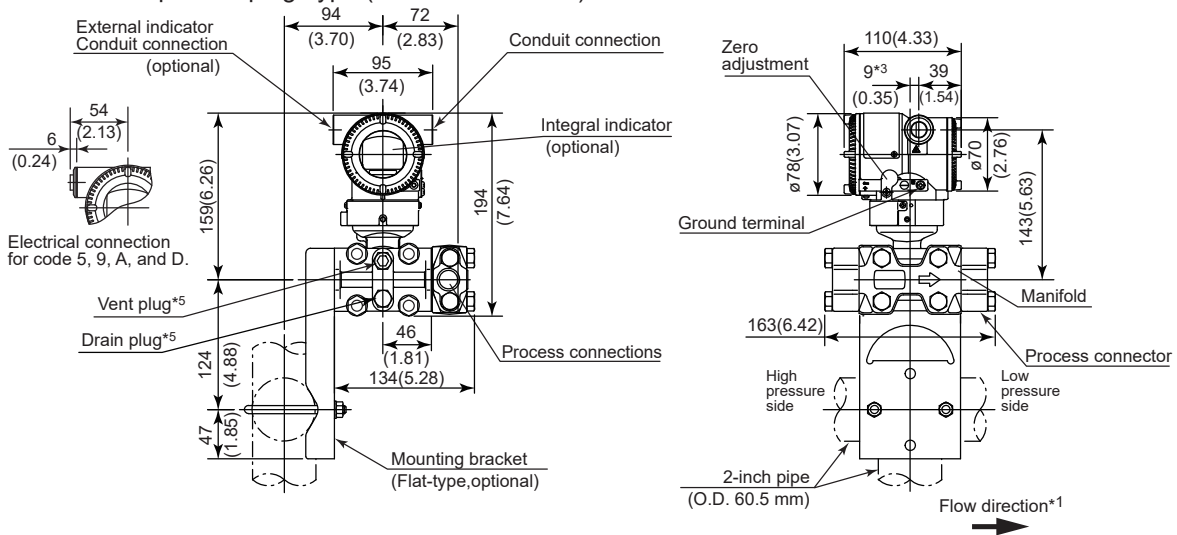
Measurement Span Code F

• Vertical Impulse Piping Type

Process connector upside (Installation code 6)



• Horizontal Impulse Piping Type (Installation code 9)



*1: When Installation code 2, 3, or 8 is selected, the flow direction on above figure is reversed.
(i.e. the arrow faces to the left [←])

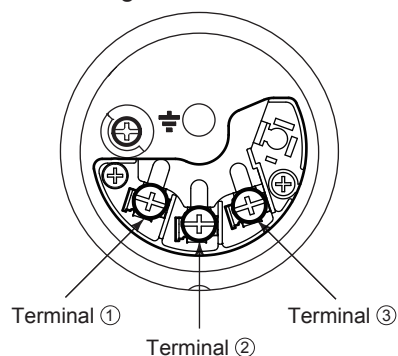
*2: When Option code K1, K2, K5, or K6 is selected, add 15 mm (0.59 inch) to the value in the figure.

*3: 15 mm (0.59 inch) when Installation code 2, 3 or 8 is selected.

*4: When electrical connection code 7 or C is selected, a blind plug is protruded up to 8 mm (0.31 inch) from the conduit connection.

*5: When option code UN is specified, Vent/Drain holes and plugs are not applicable.

• Terminal Configuration



• Terminal Wiring

| | | | |
|--------|---|---|--|
| SUPPLY | + | ① | Power supply and output terminals |
| | - | ② | |
| CHECK | + | ③ | External indicator (ammeter) terminals*1*2 |
| or | - | ② | |
| ALARM | + | ③ | Status contact output terminals*2 |
| | - | ② | |
| | | ⏏ | Ground terminal |

*1: When using an external indicator or check meter, the internal resistance must be 10 Ω or less. A check meter or indicator cannot be connected when /AL option is specified.

*2: Not available for FOUNDATION Fieldbus and PROFIBUS PA communication types.